

High Power Polarization Insensitive Isolator (HI Series)

The 1064 nm High Power Polarization Insensitive Isolator is characterized with low insertion loss, high isolation, high power handling, high return loss, excellent environmental stability and reliability. It is ideal for fiber laser and instrumentation applications.

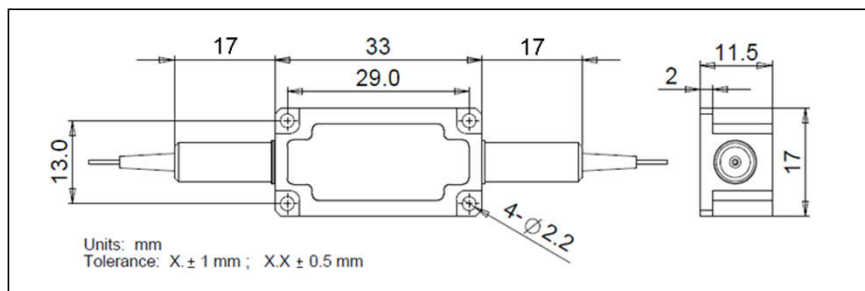
Specifications

Parameter	Unit	Value
Center Wavelength (λ_c)	nm	1064
Typ. Peak Isolation	dB	35
Min. Isolation, λ_c , 23 °C, all polarization states	dB	28
Typ. Insertion Loss, 23 °C	dB	1.7
Max. Insertion Loss, 23 °C and input power 300 mW	dB	2.0
Max. Insertion Loss, 23 °C and input power 1 W	dB	2.5
Max. Insertion Loss, 23 °C and input power 2 W	dB	3.0
Min. Return Loss (Input/Output)	dB	50/50
Max. Polarization Dependent Loss	dB	0.2
Max. Average Optical Power	W	2
Max. Peak Power for ns Pulse	kW	10
Max. Tensile Load	N	5
Fiber Type		HI 1060 Fiber
Operating Temperature	°C	10 to +50
Storage Temperature	°C	0 to +60

*IL is 0.5 dB higher, and RL is 5 dB lower for each connector added.

** The optical power handling capability will be max 1W when the isolator is terminated with connectors.

Package Dimensions



Ordering Information

HI-①①-②②-③③-④④-⑤⑤-⑥⑥-⑦⑦

①①: Wavelength

06 - 1064 nm

SS - Specify

②②: Handling Power

01 - 1 W

02 - 2 W

③③: Connector Type

1 - FC/UPC 3 - SC/UPC

2 - FC/APC 4 - SC/APC

N - None S - Specify

④④: Fiber Jacket

B - 250 μ m bare fiber

L - 900 μ m loose tube

S - Specify

⑤⑤: Fiber Length

1 - 1.0 m

S - Specify

⑥⑥: Fiber Type

1- HI 1060 fiber

S - Specify

⑦⑦: Power Type

P - Pulse Application

C - Continuous Wave